

WI-FI Intra Oral Camera

CF-682

Operation and Installation Manual



Contents

1. Introduction.....	3
1.1. Introduction of products	3
1.2. Standard configuration.....	3
1.3. Characteristic.....	3
2. Operation.....	4
2.1 Intra oral camera.....	4
2.2 WI-FI device operation.....	4
3. Install Operation	4
3.1 IOS System	4
3.2 Android System	6
3.3 Microsoft computer	9
4. How to resolve troubles.....	11
5. Notice.....	12

1. Introduction

1.1. Introduction of products

Our camera is the newest hand-held intra oral camera from us. Its lightweight design and smooth contours makes it both comfortable to hold and easy to use. Taking images with camera's integrated capture button makes video capture a simple one-step operation. And its built-in LED light source provides reliable, long-life illumination.

1.2. Standard configuration

1.Camera	1 pc
2.USB cable	1 pc
3..Disk	1 pc
4.Camera sleeves	50 pcs

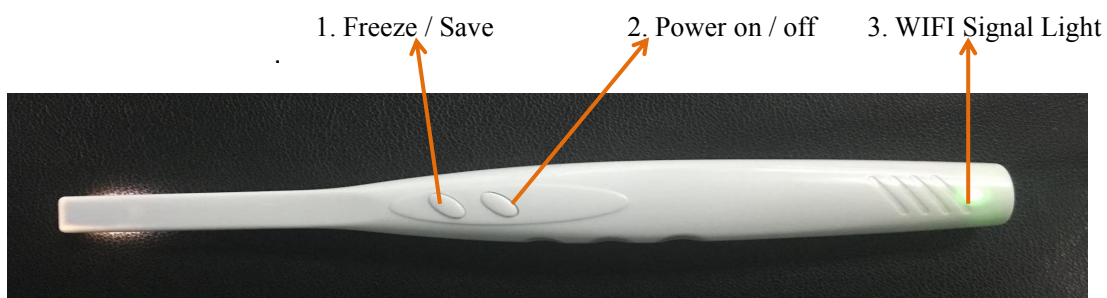
1.3. Characteristic

1. 3.0 mega pixels high resolution intra oral camera
2. With high resolution, high performance and auto focus.
3. Built-in 6pcs high brightness long-life white LED
4. Built-in WI-FI function can transmit the camera's images to mobile phone, Tablet PC and windows system PC at the same time.
5. The Front Two control buttons: freeze,/save, Power on/off
- 6.Built in Lithium battery ,can be used more than 3 hours once full charged.
- 7.Free APP include .

2. Operation

2.1 Intra oral camera

Front



Note : Before using the unit should be full charged ,WIFI password : 88888888

1. Press option 1 (Freeze/Save) the image will be freezed in the monitor, and then press it, the images will be save in software.

2. Press option 2(Power on / off) Power on ,long press then power off
3. The WIFI signal Light will turn green in 2 seconds , camera LED light will turn on after 8 seconds .

2.2. WI-FI device operation

1.Install "MLG" .app to your mobile phone, Tablet PC and Computer system.
(we offer three free software for use)

① (for Android system)



② (for Microsoft computer)



③ (For Iphone system)



Note: ③ (Use iphone or Ipad), direct access to the APP Store, search "MLG" and download then install software

2.After installation, the mobile phone will has a logo as



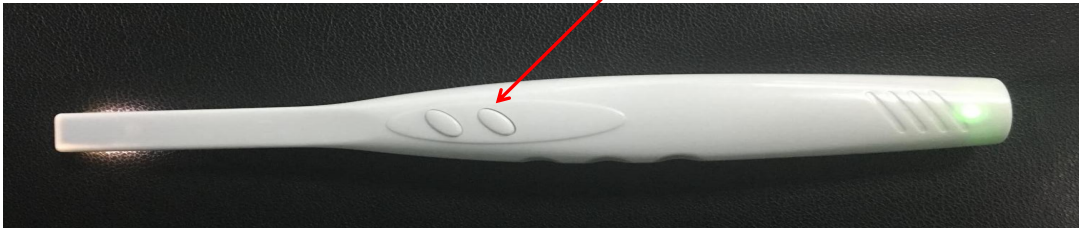
- Note:** 1.Please keep the battery the full charged .
2.Enter into the software,please ensure the device wifi linked ok.

3.The installation instruction

3.1. IOS System

1. Long press "power on/off ",the power light will turn green in 2 seconds,camera LED lights will turn on after 8 seconds . (Note: the IP address has been set in before they leave the factory, every machine has a dedicated IP code)

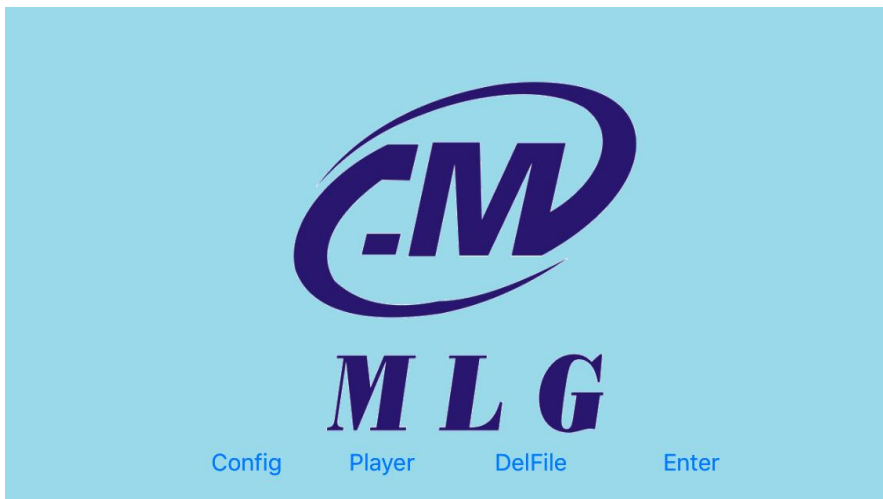
Power on/off



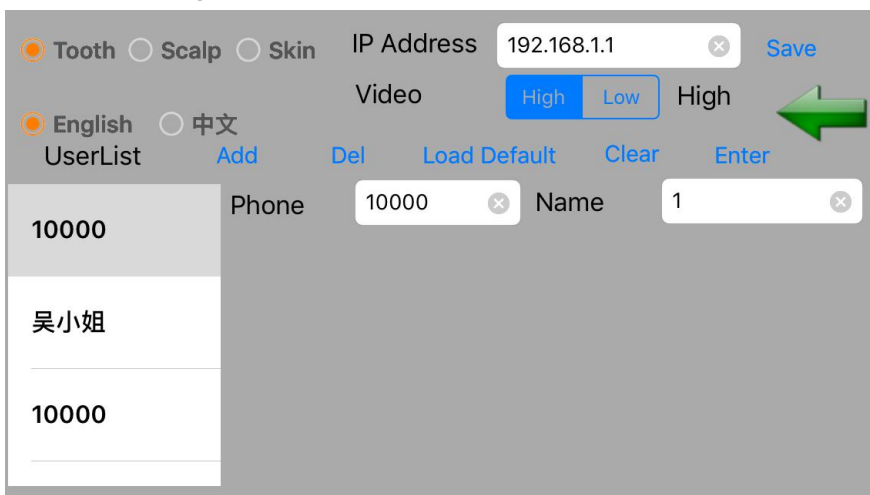
2. Click "Setting" of mobile phone, and set the WI-FI and connect the WI-FI IP number, the password "88888888", once connect, it will come below :



3. Back to mobile phone Menu, and click  Pop-up interface:



4. Click on Settings as below :



Please follow below setting :

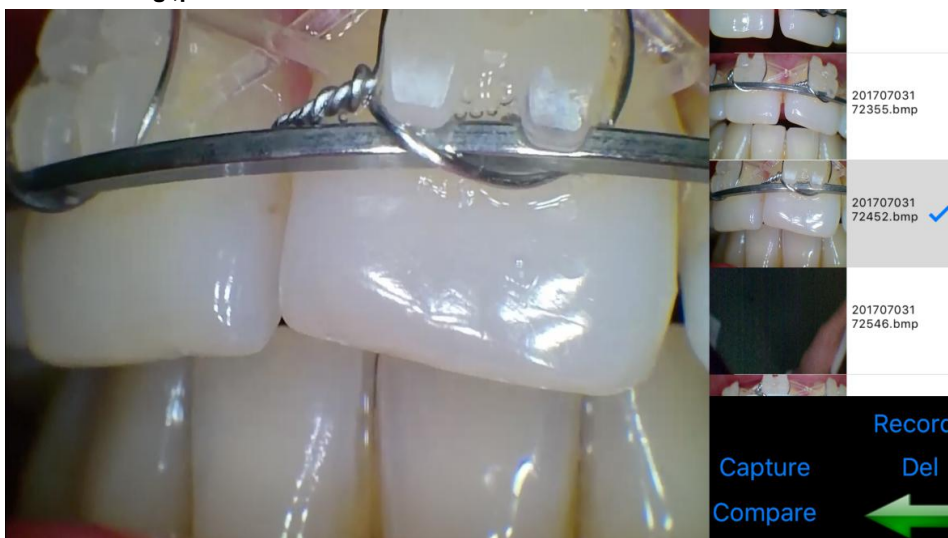
Content : tooth

Language: Chinese and English

Video: High

Ip address will be always :192.168.1.1

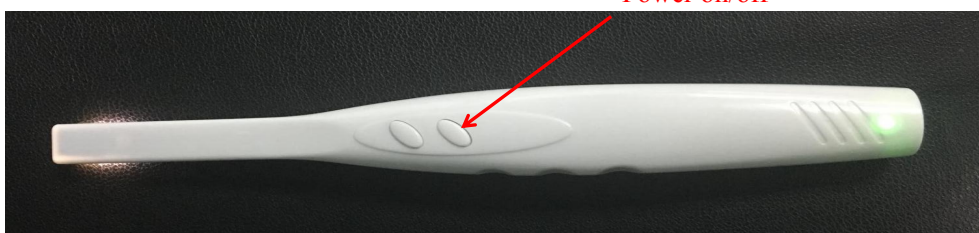
5. After setting ,please click “save” and then click  And then click enter into pop-up interface



3.2. Android System

1. Long press “power on/off ”,the power light will turn green in 2 seconds,camera LED lights will turn on later (Note: the IP address has been set in before they leave the factory, every machine has a dedicated IP code)

Power on/off



2. Click “ Setting” of mobile phone, and set the WI-FI and connect the WI-FI IP number,the password “88888888”,once connect ,it will come below :



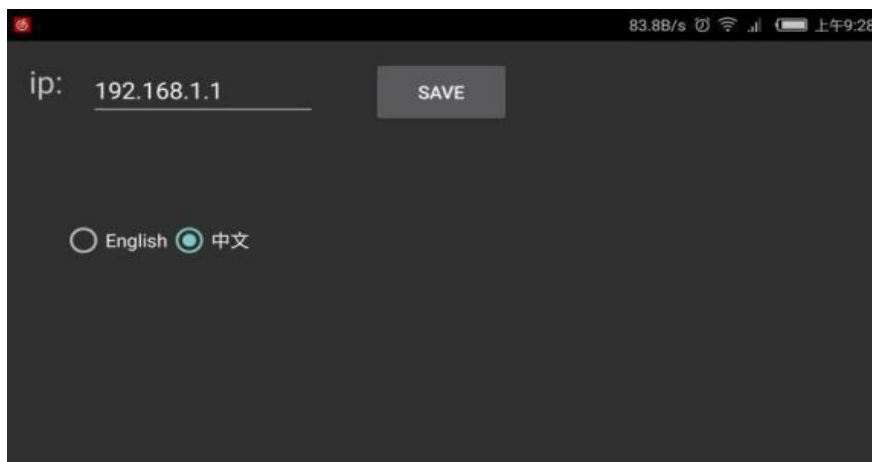
3. Back to mobile phone Menu, and click Pop-up interface,choose “tooth”



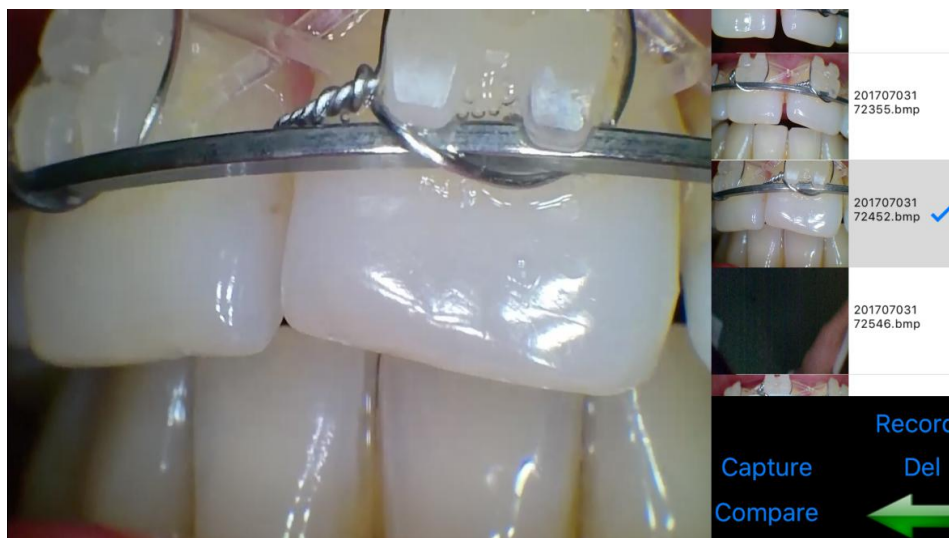
4. Press “register” to set the info:



5. Press "setting" to choose language version : English and Chinese and then press "save"
(Note: IP will be always 192.168.1.1)



6. Press "Enter" then it will enter into the software :



3.3. Microsoft computer

Note: You need to close the computer wire connection and connect the WI-FI.

1. First you need to open the folder



2. There are 3 applications in the folder like the picture as follow.

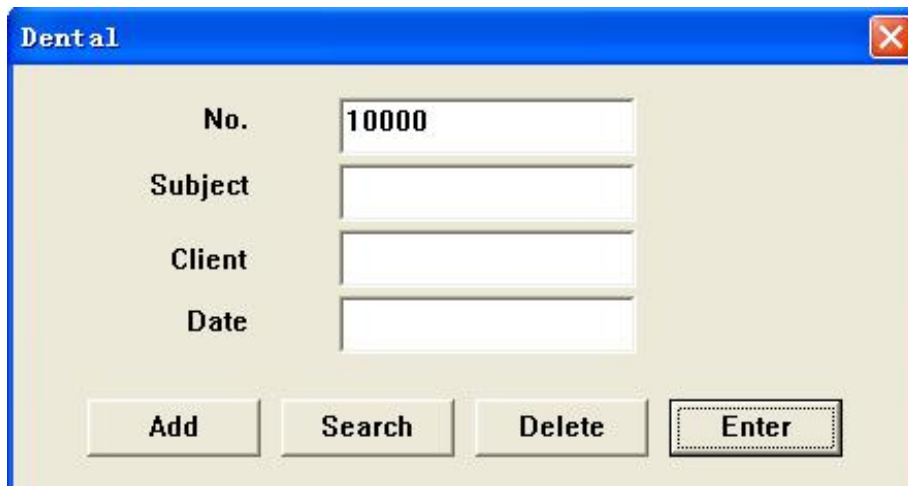
Note: The applications can not be working when out of the folder



3. Click the application, will pop-up the interface as follow.



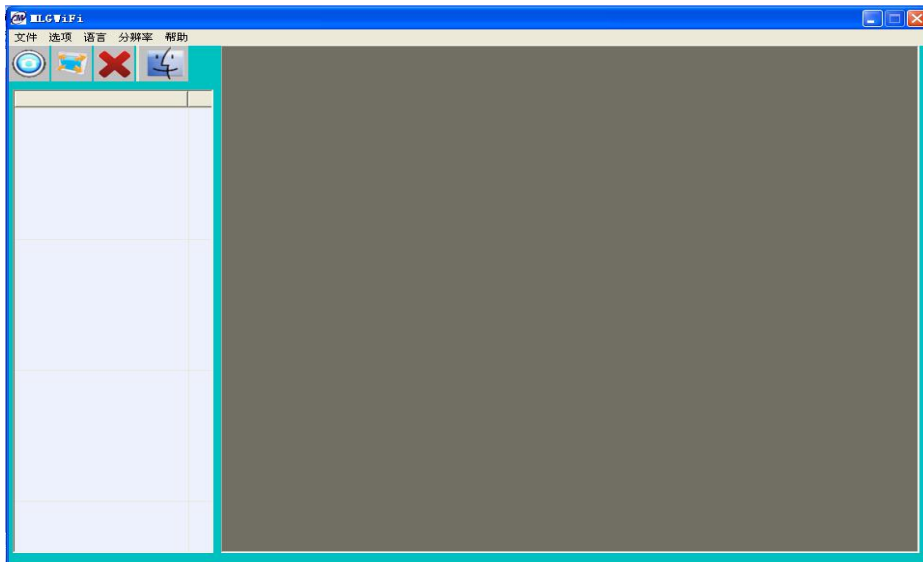
4. You can establish a simple medical history sheet. click "Add" Add photo albums, and click "Enter" to Enter



No.	10000
Subject	
Client	
Date	

Buttons: Add, Search, Delete, Enter

5. Edit the info, then press "Enter" into software :



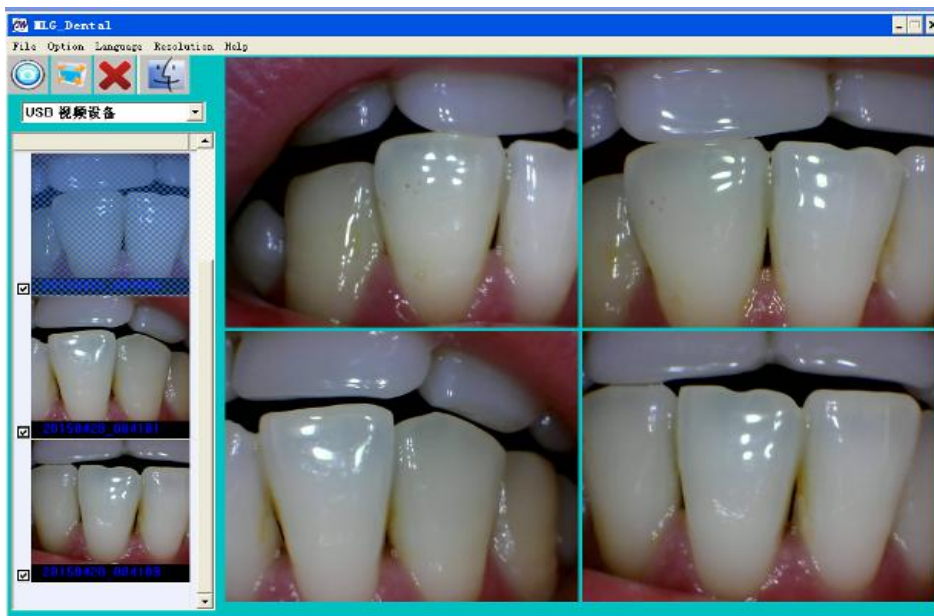
Cap 1  : Capture

Cap 2  : Full screen

Cap 3  : Delete

Cap 4  : Compare

6. Setting : Use “USB 视频设备”, then the system starts :



4. How to resolve trouble

If there are some troubles of products, Please see below special case firstly. If still can't be solved, please contact your local dealer.

Item	trouble states	resolve methods
1	the products can't be startup when open (ON/OFF)switch)	1.check the unit whether charged
2	computer or TV can't reveal images	1.check the connection between products and computer or TV if it is correct 2.check the Driver Setup if it is finished,
3	in the process of use, the image will be a little blurry	if you use it in the first time, it belongs to natural reaction. It will be better later on
4	freezing images then appears dithering	the hand shakes when uses camera to capture image, when users are skillful for use products, the phenomena can be changed
5	the images of computer or TV have spots	1.check the screen if it has spot 2.check the lens if it has spot 3.if the spot can't be cleaned, please contact the local dealer

5. Notice

Before each usage, check the outer surface of the products for any signs of physical damage or defect. The surface of the products should have a smooth finish, with no evidence of chipping or damage .

KNOWLEDGE OF WARNINGS AND CAUTIONS

Users must exercise every precaution to ensure personnel safety, and be familiar with the warnings

and cautions presented throughout this manual and summarized below.

CAUTION: TO REDUCE THE RISK OF ELECTRICAL SHOCK, DO NOT REMOVE THE COVER OF THE CONTROL MODULE OR POWER SUPPLY ADAPTER. THERE ARE NO USER-SERVICEABLE PARTS INSIDE.

SERVICING SHOULD BE PERFORMED BY QUALIFIED DEALER SERVICE REPRESENTATIVES ONLY. CONNECTING ANY DEVICE TO THE SUPER CAMERA SYSTEM THAT DOES NOT MEET THE EQUIVALENT SAFETY REQUIREMENTS OF THE SYSTEM MAY REDUCE THE SAFETY EFFECTIVENESS OF THE SUPER CAMERA SYSTEM.

TURN OFF POWER AND UNPLUG THE SUPER CAMERA SYSTEM COMPONENTS BEFORE PERFORMING CLEANING PROCEDURES.

WARNING: TO PREVENT FIRE OR ELECTRICAL SHOCK, DO NOT EXPOSE THIS EQUIPMENT TO RAIN OR MOISTURE.

DO NOT SPRAY CLEANING LIQUIDS OR DISINFECTANTS DIRECTLY ON THE CAMERA HANDPIECE OR CONTROL MODULE. USE CARE NOT TO ALLOW LIQUIDS TO RUN INTO INTERNAL CIRCUITRY.

DO NOT WIPE THE SURFACES USING BENZINE, THINNER, ETC. AS THIS MAY DEGRADE THE FINISH.